



**GREEN**  
DEFENCE RAYA GOLF RESORT



## DHA - LAHORE

### EXCEPTIONAL LIVING

Defence Housing Authority Lahore (DHA) is nationally recognized as a successful organization that has endeavoured to provide the residents of Pakistan with a high-end community lifestyle.

Tuned to the latest worldwide developments in Urban and Community Management and with their insightful approach and expertise, DHA has successfully created its own unique "Defence Living" that is vibrant, attractive, convenient and livable.

By infusing modern designs into strategic urban planning as well as sustainable living environment in all its projects, DHA residents of their residential and commercial projects can be assured of an integrated and fulfilling lifestyle, exceptional in every way. DHA emphasizes on building communities with the essence of socio-cultural and religious traditions and needs, hence its future urban dwellings will be even more favourable, modern and environmentally friendly.



## BRDB - MALAYSIA

### INSPIRED BY THE RICHNESS OF LIFE

At BRDB Developments Sdn Bhd (BRDB), the source of inspiration comes from the richness of life itself. It is apparent in all the things they do and forms the tenets of the BRDB brand philosophy in creating value centered in fine quality and craftsmanship.

More than 50 years on, BRDB continues to establish itself as one of the most successful and trustworthy luxurious property developer in Malaysia. A winner of many prestigious local and international accolades, BRDB's premium status of development stands for itself. Deemed as the developer of Bangsar, one of the most affluent neighbourhoods in Kuala Lumpur, BRDB has continued cultivating communities and building landmark addresses such as The Troika in Kuala Lumpur city centre. Down southern Malaysia in the state of Johor, successful developments built include the well-established suburb of Permas Jaya and a premium waterfront living, Emerald Bay. In the international arena, BRDB remains competitive by developing key prestigious projects in Pakistan, Australia, United Kingdom and Oman.

BRDB continues to pave a track of excellence in building premier addresses, developing iconic communities and remains inspired in enriching lives.

**BRDB**



BROUGHT TO YOU BY



**zameen.com**

Har Pata, Humain Pata Hai



## DHA & BRDB PREMIUM REDEFINED

The synergy between DHA Lahore and BRDB Developments Sdn Bhd (BRDB) brings forth a new meaning to the word “premium”. BRDB’s first overseas venture was with DHA Lahore in Pakistan and the venture significantly marks Pakistan’s first master planned community in a golf resort known as Defence Raya. The project further expanded into an integrated township, built around the lush greens of an 18-hole international standard golf course.

Defence Raya spans **400 acres** of beautifully landscaped luxury home development, a prestigious golf and country club, a high-end commercial centre, as well as 3 towers of luxurious condominiums. Future developments will see the rise of a 5-star hotel, and a stylish shopping mall for the elite community. All within a tranquil, gated and guarded development that provides 24-hour security and peace of mind.

A Joint Venture Between



BROUGHT TO YOU BY



## THE CLUBHOUSE DESERVINGLY YOURS

The Defence Raya Golf & Country Club is carefully crafted over **7 acres** of greenery and with a spacious built-up area of **225,000 sq.ft.** The Clubhouse offers lifestyle and entertainment space befitting a luxurious golf club, accessible to the privileged few. Members enjoy superior sports and recreational facilities in the form of tennis and squash courts, table tennis, snooker, heated indoor swimming pools, card room, gymnasium, saunas, saloons, business centre, banquet hall, cinema, guest rooms and suites, restaurants and lounges, and much more.

Membership at this prestigious golf club certainly has its privileges.

## THE GOLF COURSE PAR EXCELLENCE

The Defence Raya Golf Club is Pakistan's first international standard 18-hole golf course designed by famous golf course architect firm, Nelson & Haworth. Today, it is deemed as the finest golf course in Pakistan. The well-manicured course, beautifully built on undulating terrain is surrounded by long fairways, immaculate greens, challenging water hazards and sand bunkers. As it turns out, the course is perfect for the serious and earnest golfers but at the same time, offers inspiration to the aspiring professional golfer.



BROUGHT TO YOU BY





## REDEFINING SUMPTUOUS LIVING

Defence Raya has been changing the face of real estate development in DHA Lahore for over a decade. It consists of a number of villas, apartment blocks, and commercial plazas arranged around an international-standard 18-hole golf course.

The Defence Raya Golf & Country Club has become one of the top community clubs in the country, and its membership is highly sought-after. The residential and commercial properties in Defence Raya offer exquisite views of the golf course and easy access to the country club.

With its beautiful views, meticulous designs, and wide range of property options, Defence Raya is truly the best place to live in Lahore. The 18Green, a condominium complex of three masterfully planned towers, is set on continuing the legacy of luxury established.

BROUGHT TO YOU BY



## UNMATCHED OPULENCE

The lifestyle standards offered in 18Green Condominiums are reflective of the luxury and comfort expected from the brand name 'Defence Raya'. The project also has common terraces where residents can interact with each other. This way, they can interact and create a truly integrated community.



BROUGHT TO YOU BY



**zameen.com**  
Har Pata, Humain Pata Hai



## PALATIAL DWELLINGS

This project consists of three towers, with expertly designed condominiums on multiple storeys, and a dual level penthouse on the top floor. The apartments on offer are:

- 1-Bed Apartments
- 2-Bed Apartments
- 3-Bed Apartments
- 4-Bed Duplex Penthouses

With the majority of the apartments facing lush greens of international standard golf course

BROUGHT TO YOU BY



**zameen.com**  
Har Pata, Humain Pata Hai

## BASK IN SPLENDOUR

The design story told by the interiors of 18Green Condominiums is the one that reflects the meticulous planning and attention to detail involved, which makes these condominiums ideal for a lifestyle that most people aspire towards.

Every aspect of the interior has been planned in such a way that life here will be comfortable.



BROUGHT TO YOU BY



**zameen.com**  
Har Pata, Humain Pata Hai





## THE JOY OF CONVENIENCE

This condominium complex will let its residents experience a hassle-free life, with the extensive amenities it offers. In addition, all necessary safety protocols have also been ensured to preserve their peace of mind.

BROUGHT TO YOU BY



## SERVICES BEYOND COMPARE

The services offered in 18Green Condominiums are unparalleled in the town. Whether it is an international-standard 18-hole golf course, high-end security system, the perpetual maintenance system, or recreational facilities.

### KEY FEATURES



Ample  
Parking Area



Centralised  
Laundry Services



Driver's  
Accommodation



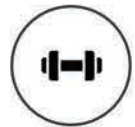
Concierge  
Services



Convenient  
Grocery Store



Swimming Pool



Gymnasium



Heating &  
Air Conditioning



Complete  
Power Backup



Running  
Hot Water



BROUGHT TO YOU BY



**zameen.com**  
Har Pata, Humain Pata Hai



## FITNESS AT YOUR DOORSTEP

Residents of 18Green Condominiums will not have to go all the way to the country club for their swimming and fitness activities. There is a swimming pool and gym within the premises, exclusively meant for the project's residents. Both of these are fully equipped with all the modern facilities, and will be maintained regularly.

BROUGHT TO YOU BY



## A STRUCTURE THAT STANDS OUT

Coming towards 18Green Condominiums, you will surely be impressed by its façade. It consists of three towers arranged in ascending heights, with a unique elevation. The buildings are designed in a completely different way from standard apartment complexes. The top of each building, with its slanted design, truly stand out. The liberal usage of louvers, travertine, marble, and ceramic on the exteriors has ensured that this apartment complex is unforgettable for any design experts.

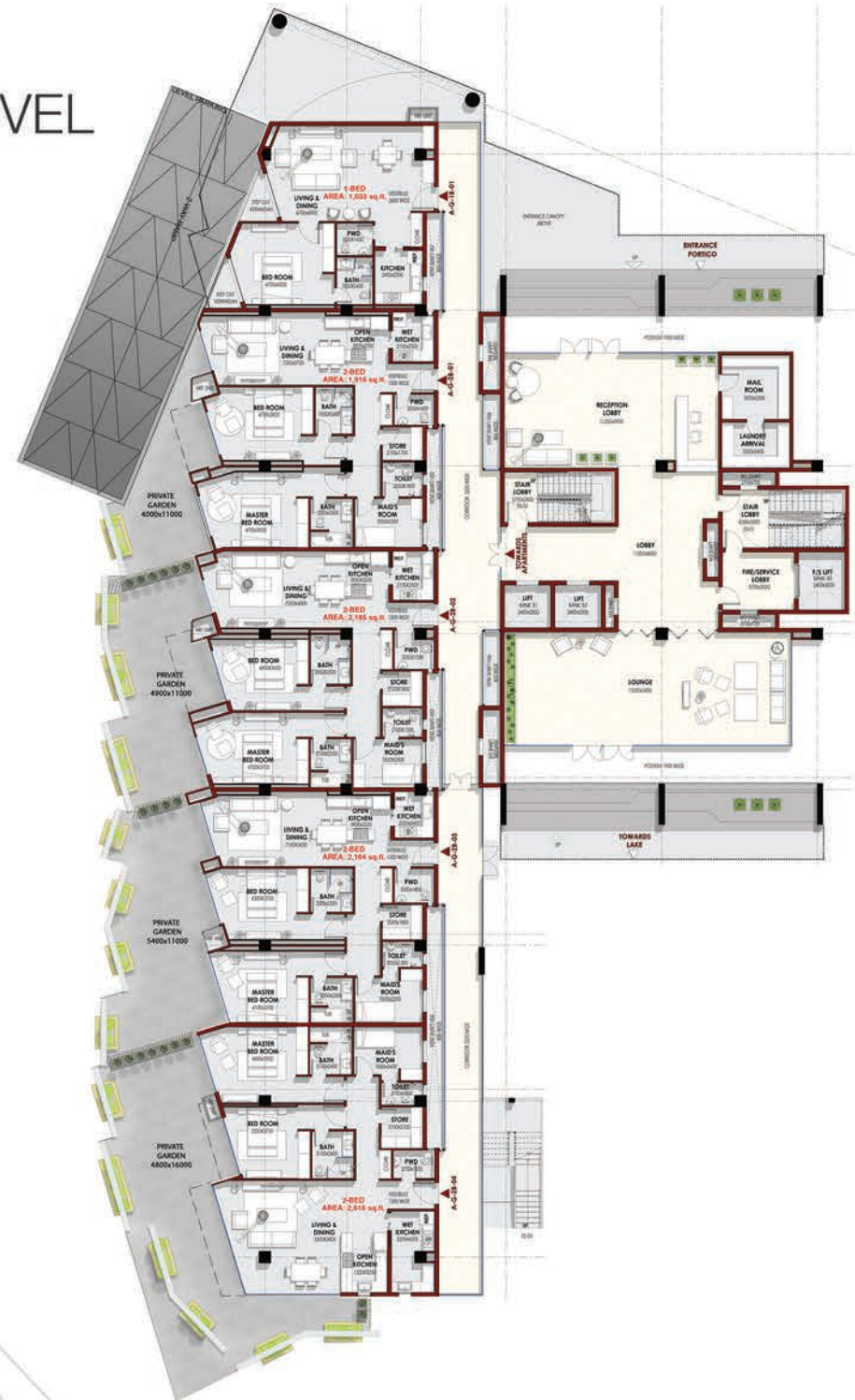


BROUGHT TO YOU BY



**zameen.com**  
Har Pata, Humain Pata Hai

# TOWER - A GROUND LEVEL



# TOWER - A LEVEL-1



BROUGHT TO YOU BY

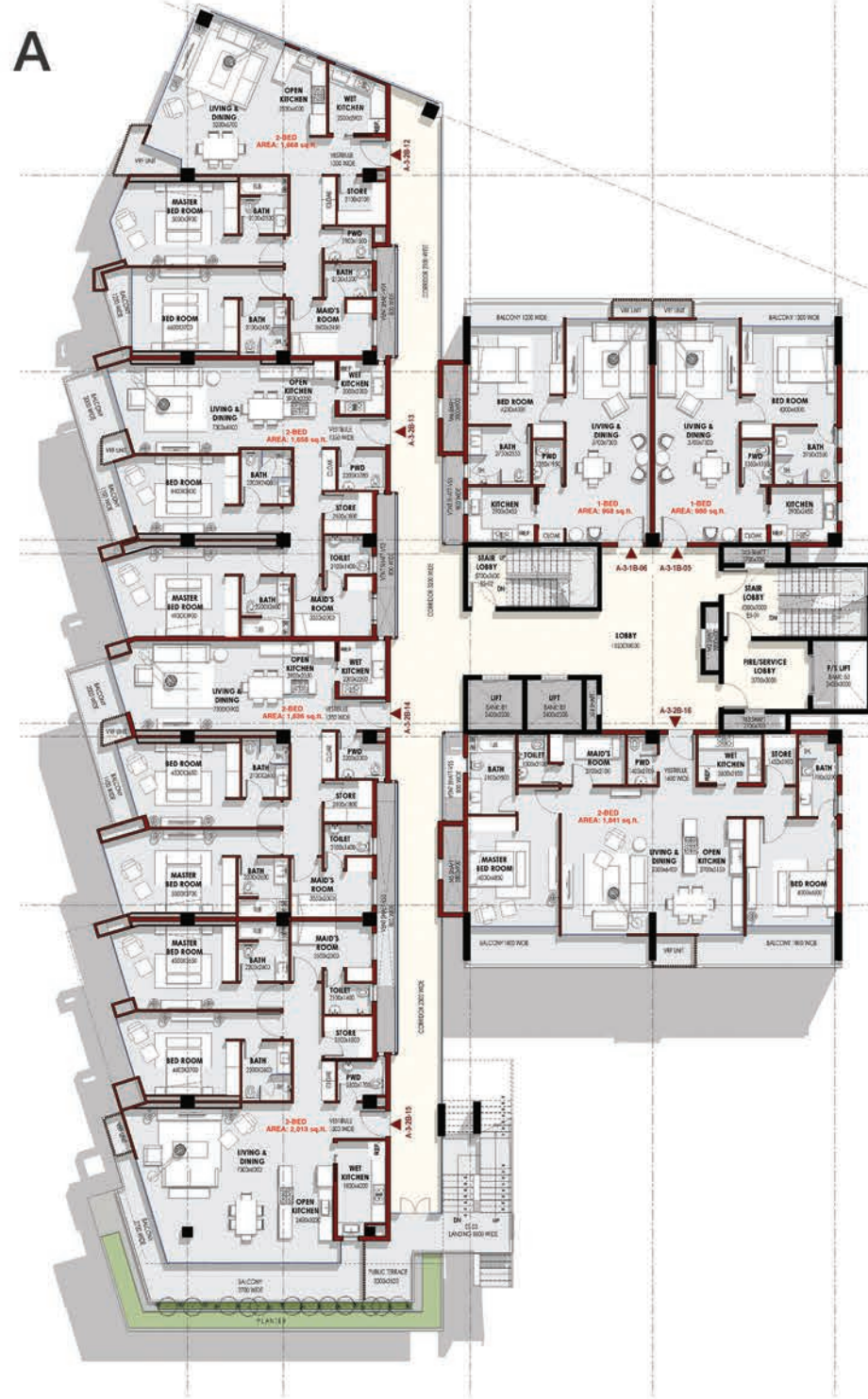


**zameen.com**  
Har Pata, Humain Pata Hai

**TOWER - A**  
LEVEL-2



**TOWER - A**  
LEVEL-3



BROUGHT TO YOU BY



**zameen.com**  
Har Pata, Humain Pata Hai

**TOWER - A**  
LEVEL-4



**TOWER - A**  
LEVEL-5



BROUGHT TO YOU BY



**zameen.com**  
Har Pata, Humain Pata Hai

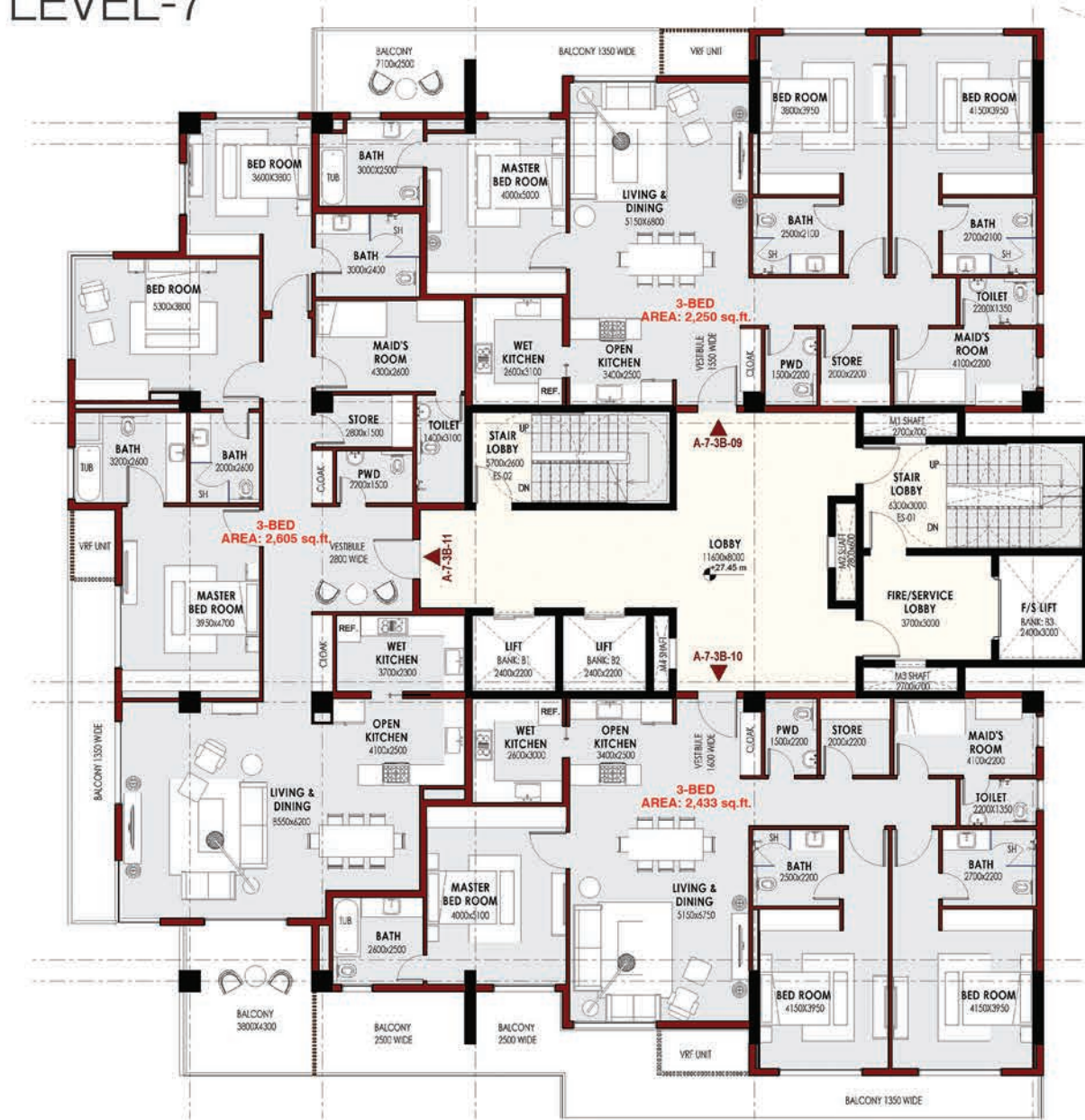
# TOWER - A

## LEVEL-6



# TOWER - A

## LEVEL-7



BROUGHT TO YOU BY

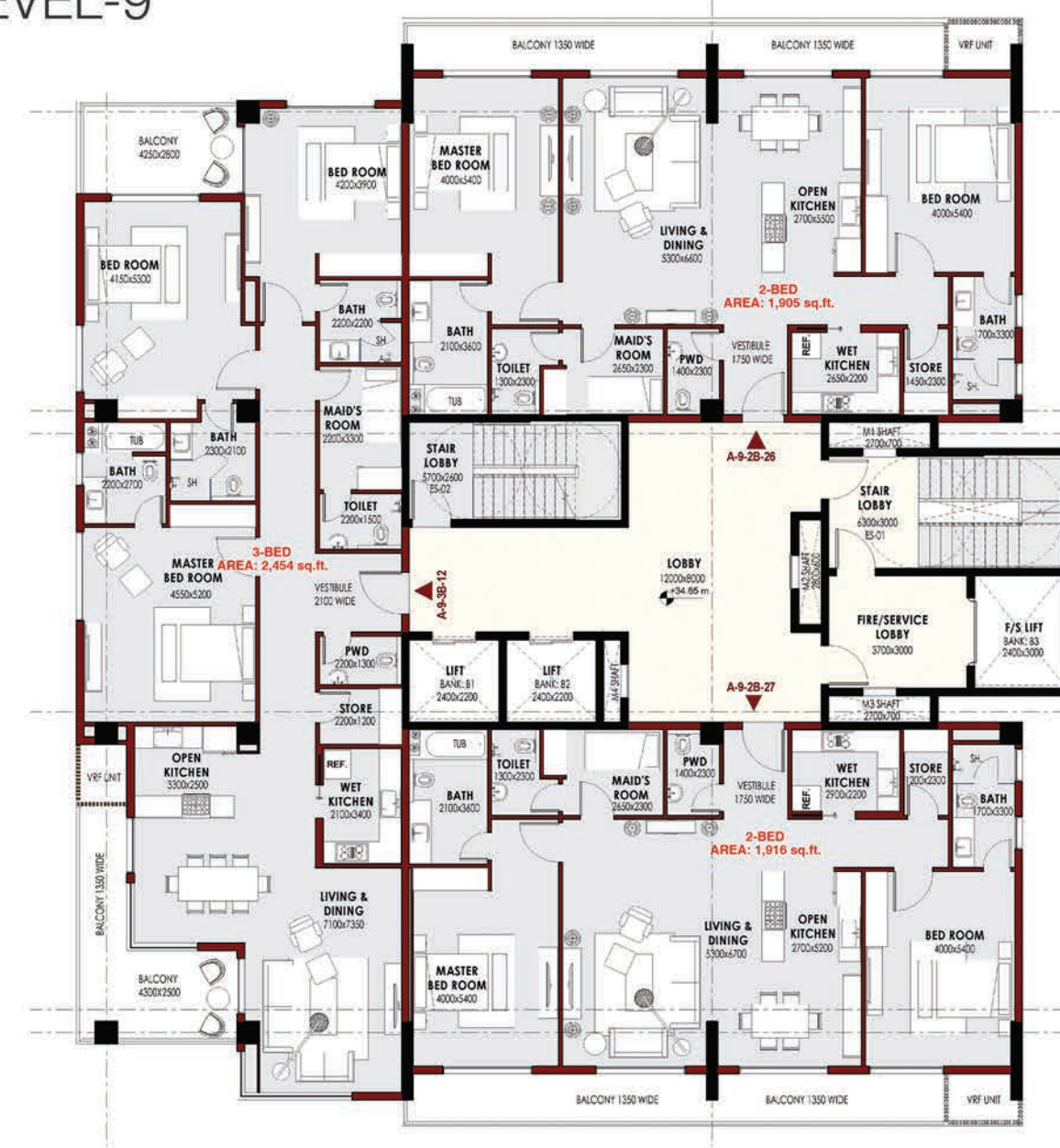




# TOWER - A LEVEL-8



# TOWER - A LEVEL-9



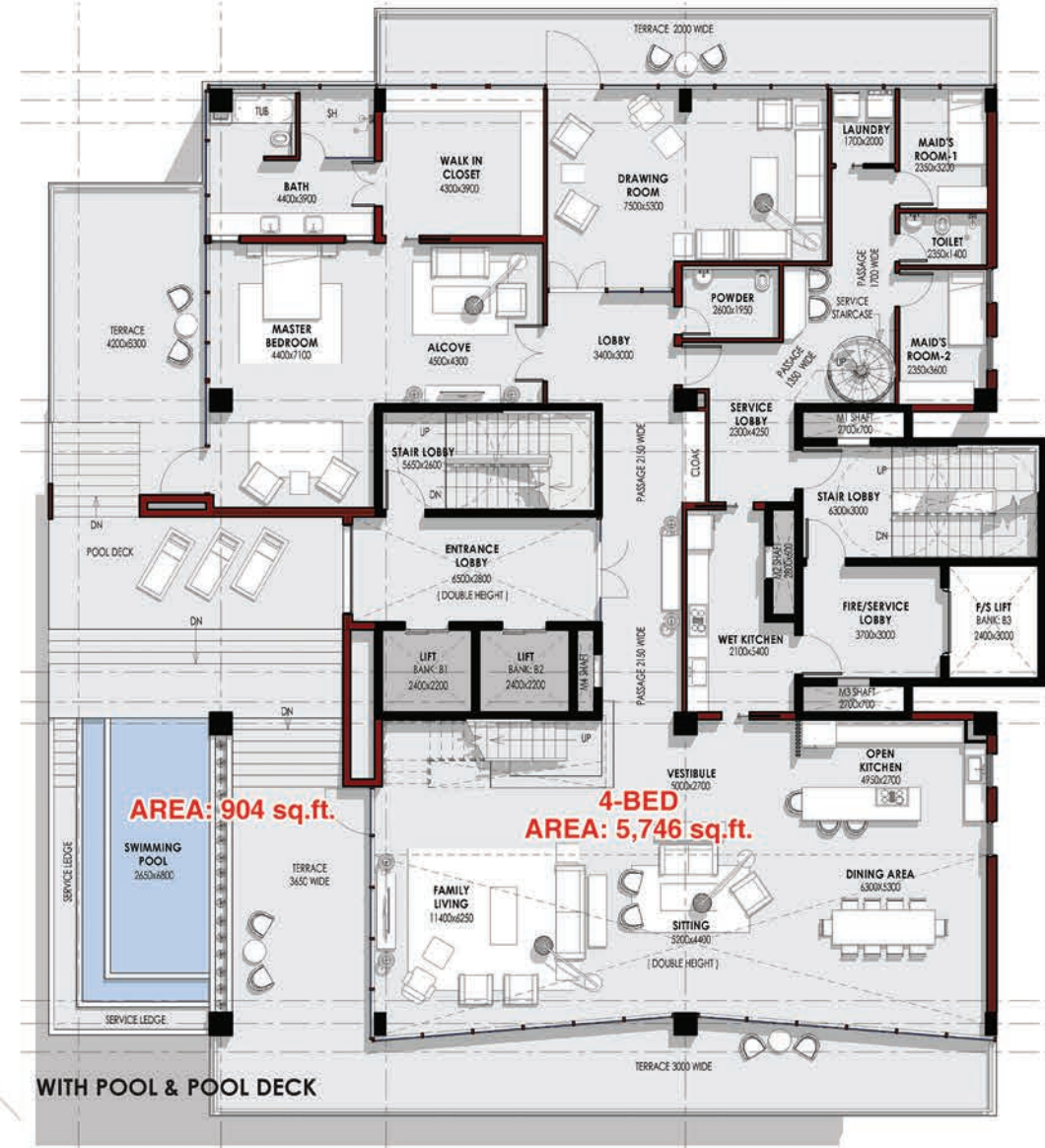
BROUGHT TO YOU BY



Har Pata, Humain Pata Hai

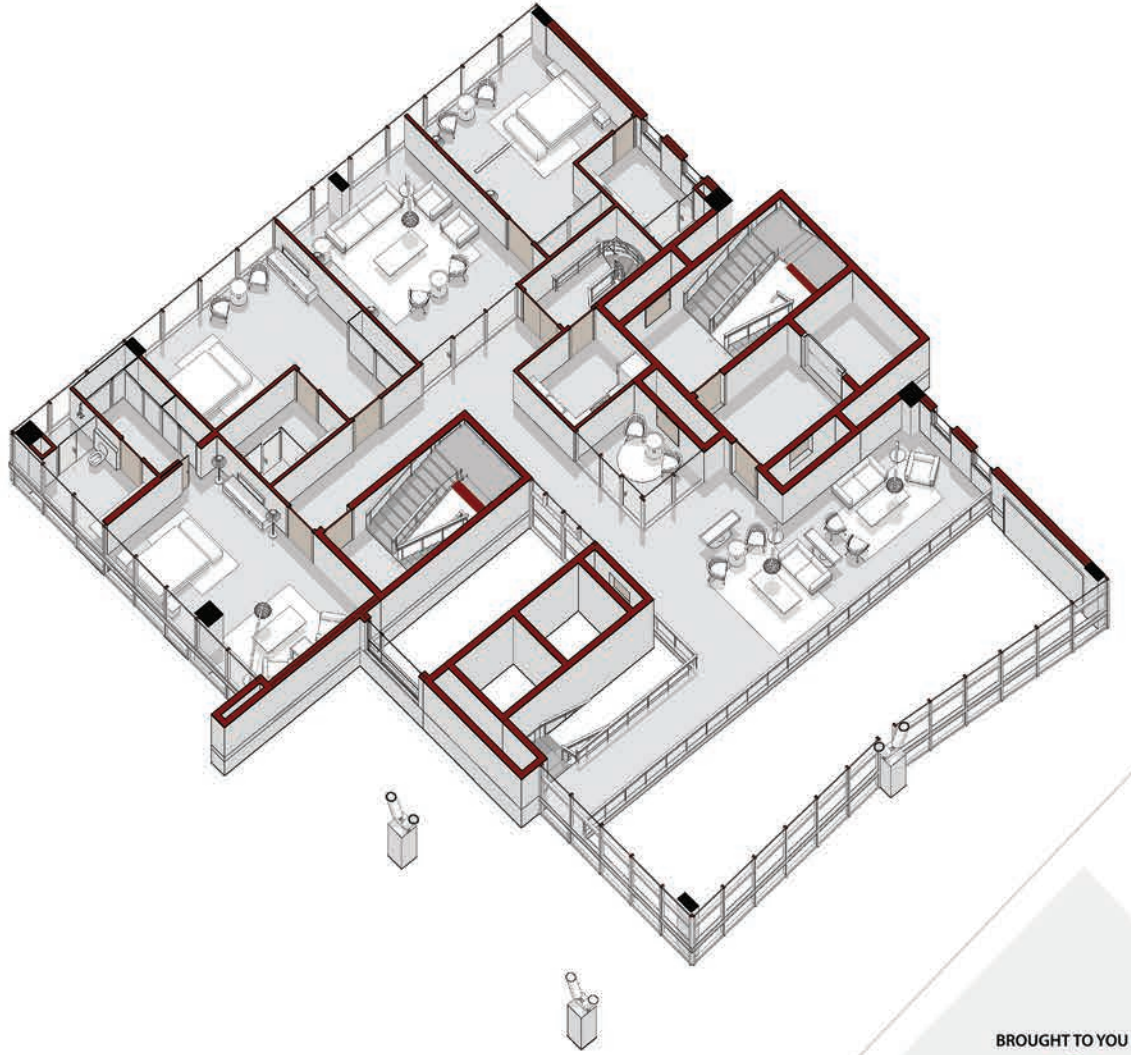
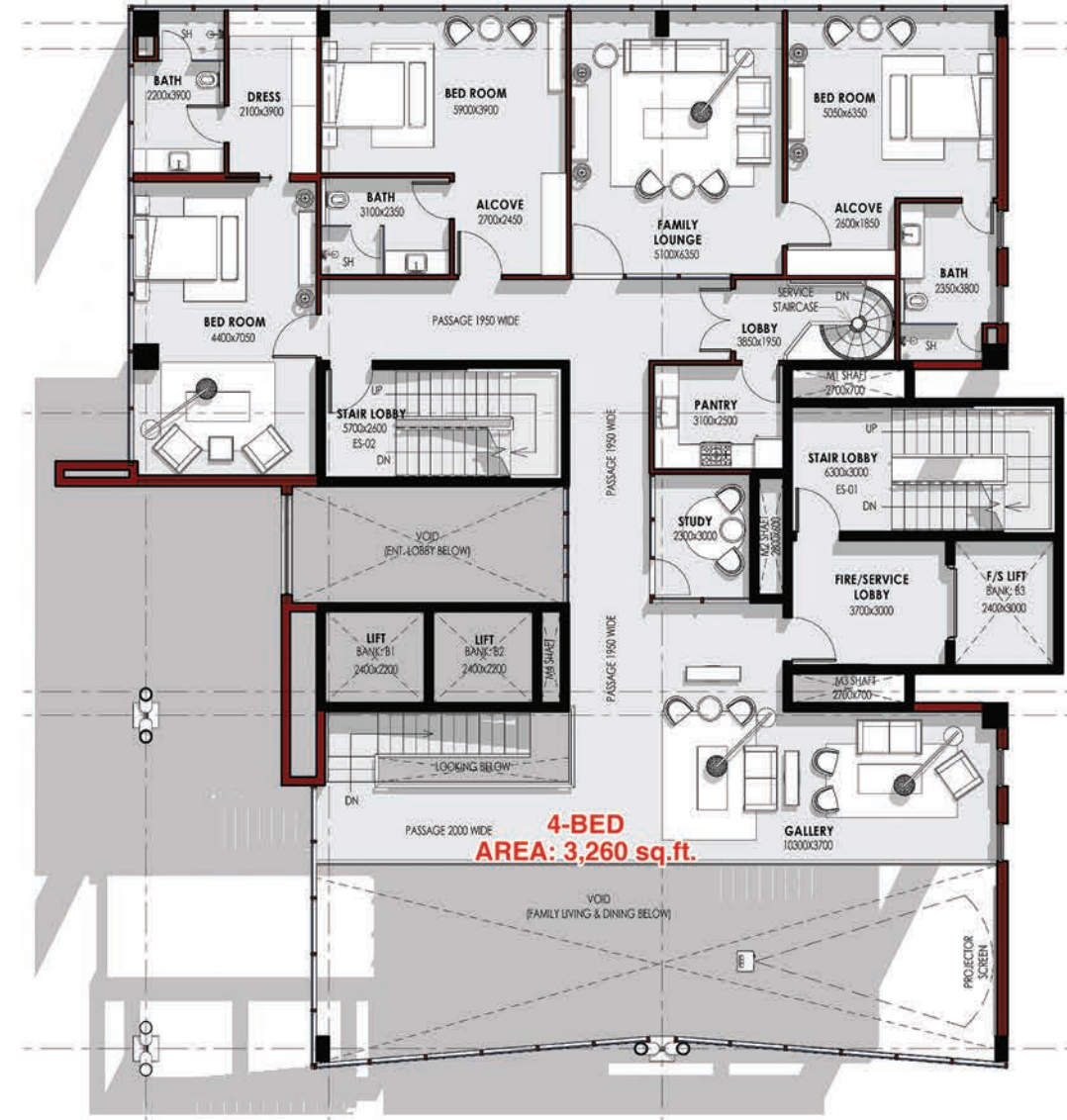
TOWER - A  
LEVEL-10

OPTION A



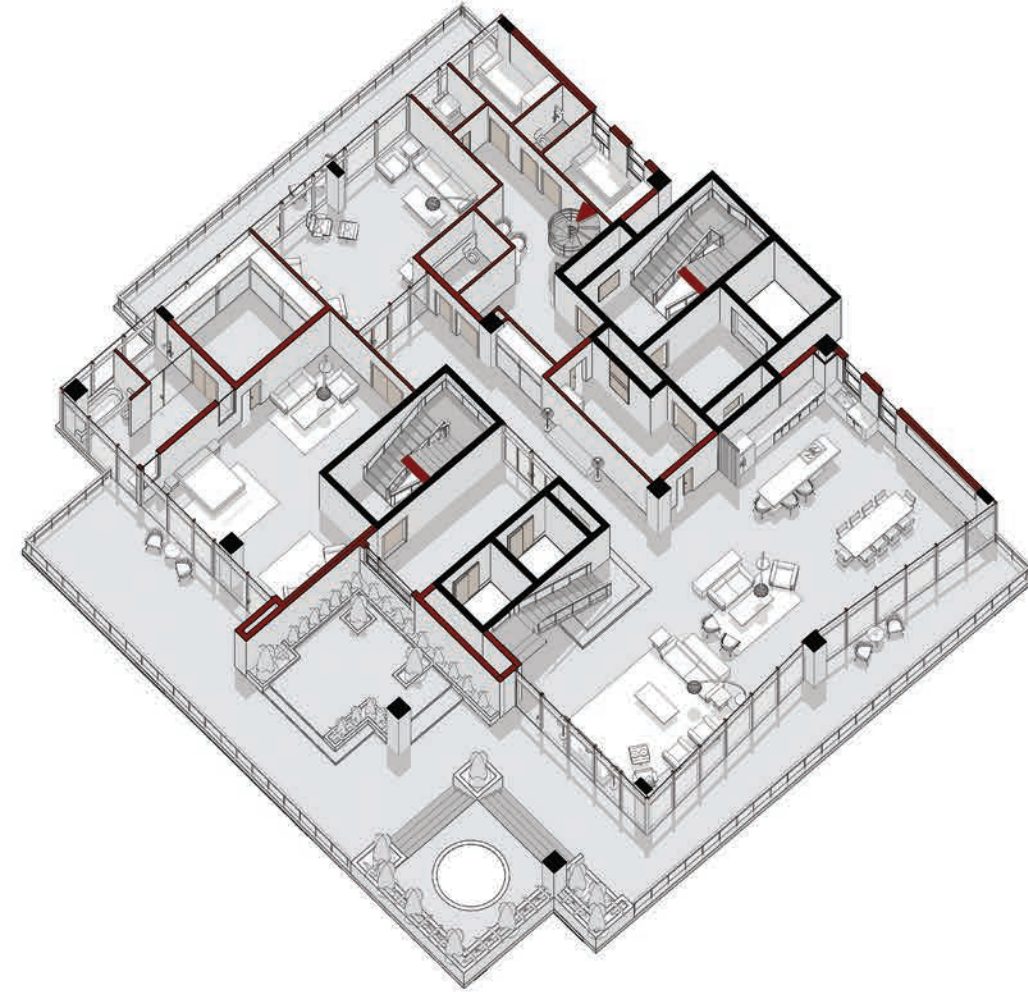
TOWER - A  
LEVEL-11

OPTION A



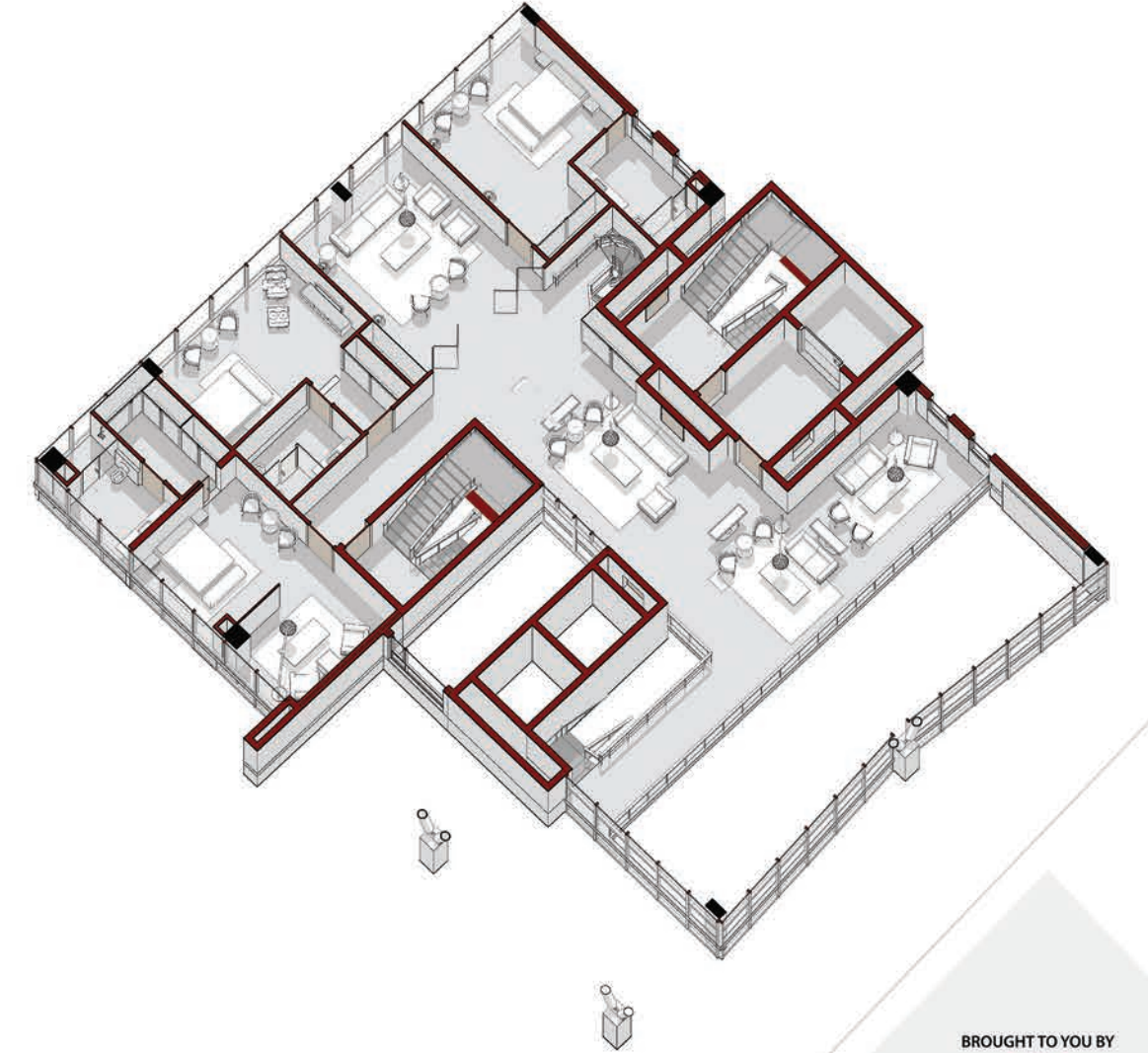
**TOWER - A**  
LEVEL-10

**OPTION B**



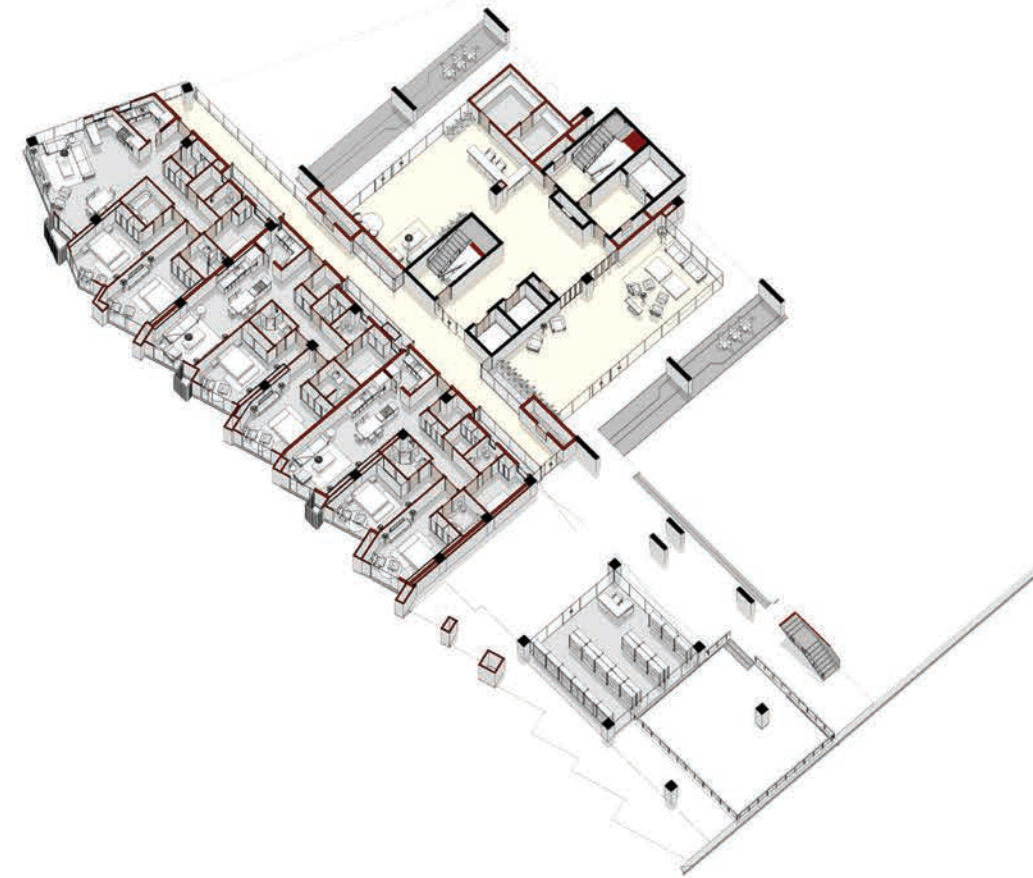
**TOWER - A**  
LEVEL-11

**OPTION B**



BROUGHT TO YOU BY

# TOWER - B GROUND LEVEL



# TOWER - B LEVEL-1



BROUGHT TO YOU BY



Har Pata, Humain Pata Hai

# TOWER - B LEVEL-2



# TOWER - B LEVEL-3

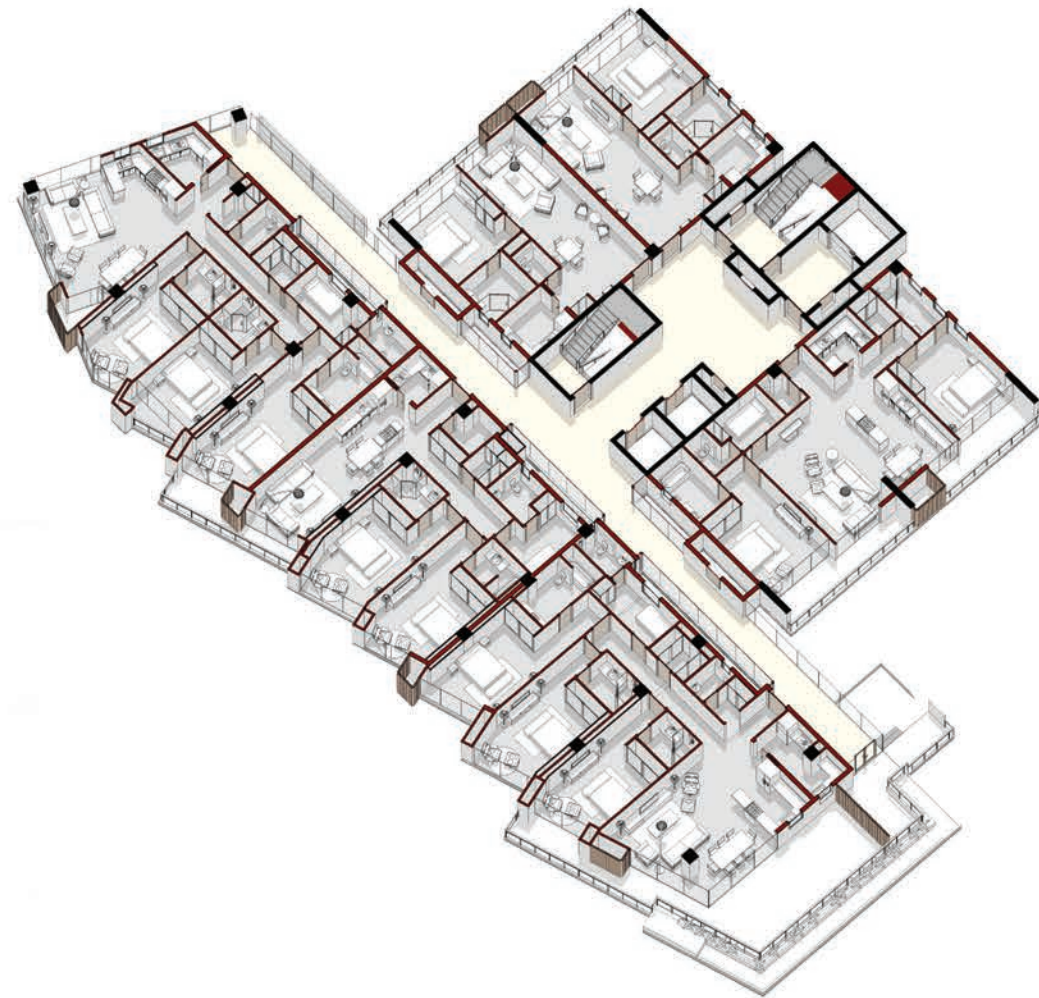


BROUGHT TO YOU BY



**zameen.com**  
Har Pata, Humain Pata Hai

**TOWER - B**  
LEVEL-4



**TOWER - B**  
LEVEL-5



BROUGHT TO YOU BY



# TOWER - B LEVEL-6



# TOWER - B LEVEL-7



BROUGHT TO YOU BY



# TOWER - B LEVEL-8



# TOWER - B LEVEL-9



BROUGHT TO YOU BY



**zameen.com**  
Har Pata, Humain Pata Hai



**TOWER - B**  
LEVEL-10



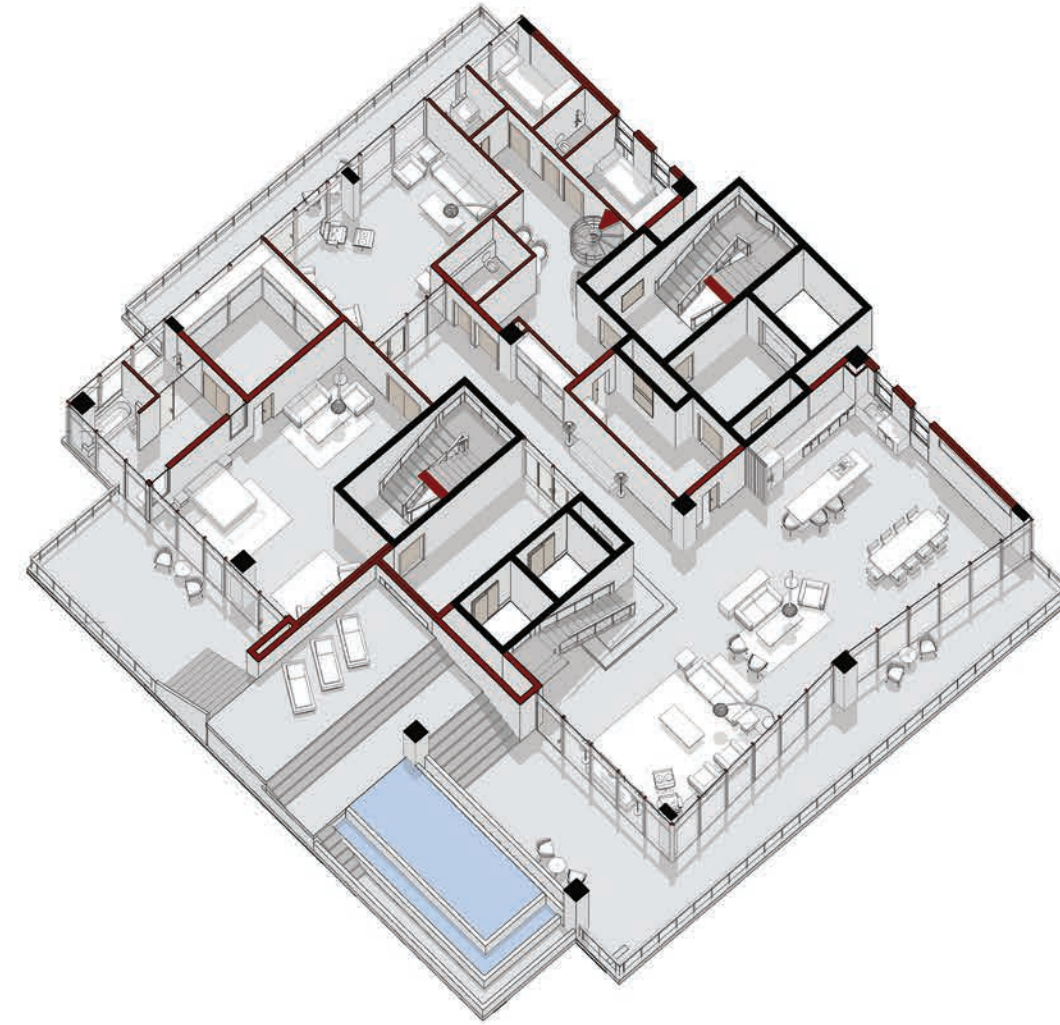
BROUGHT TO YOU BY



**zameen.com**  
Har Pata, Humain Pata Hai

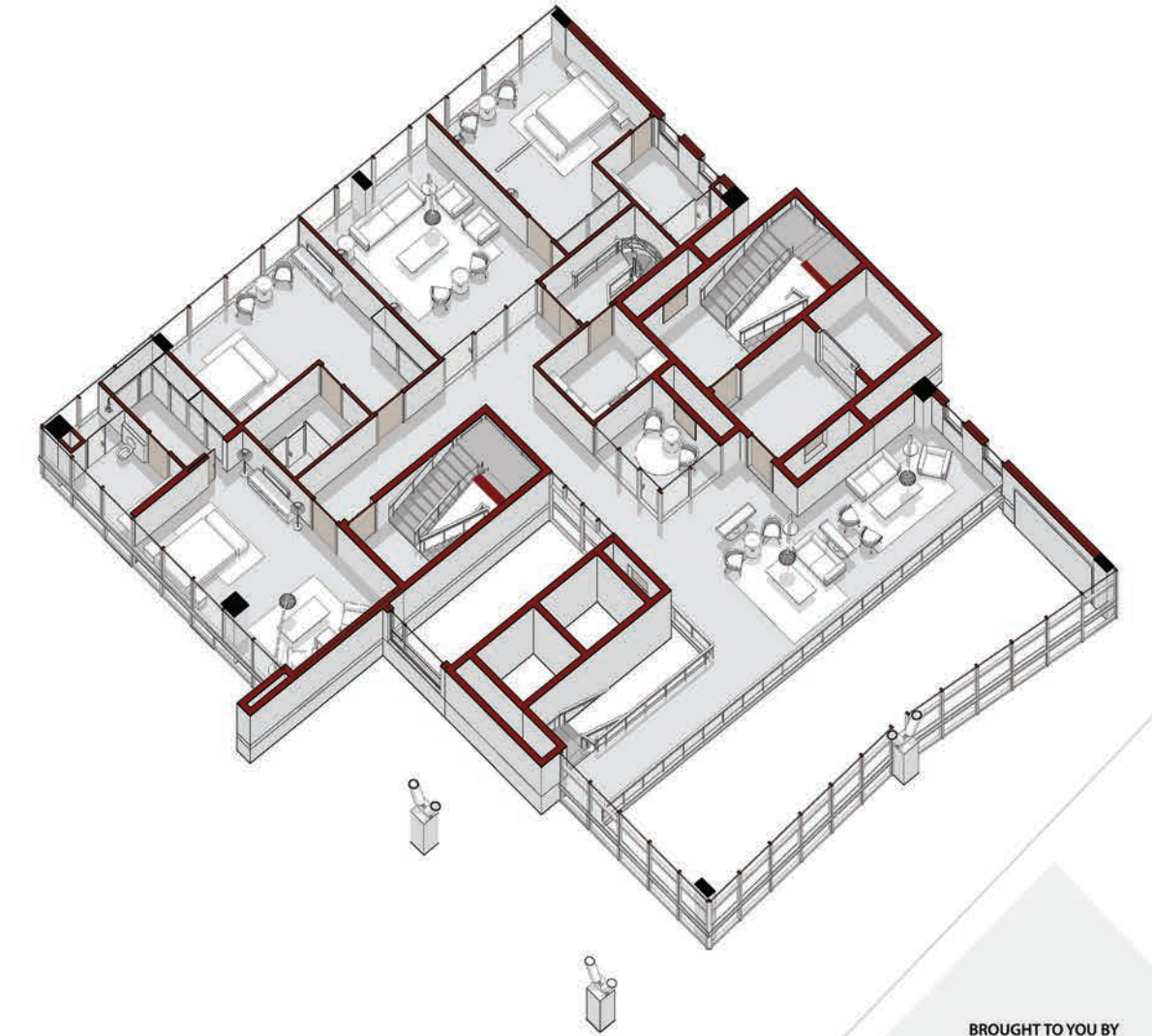
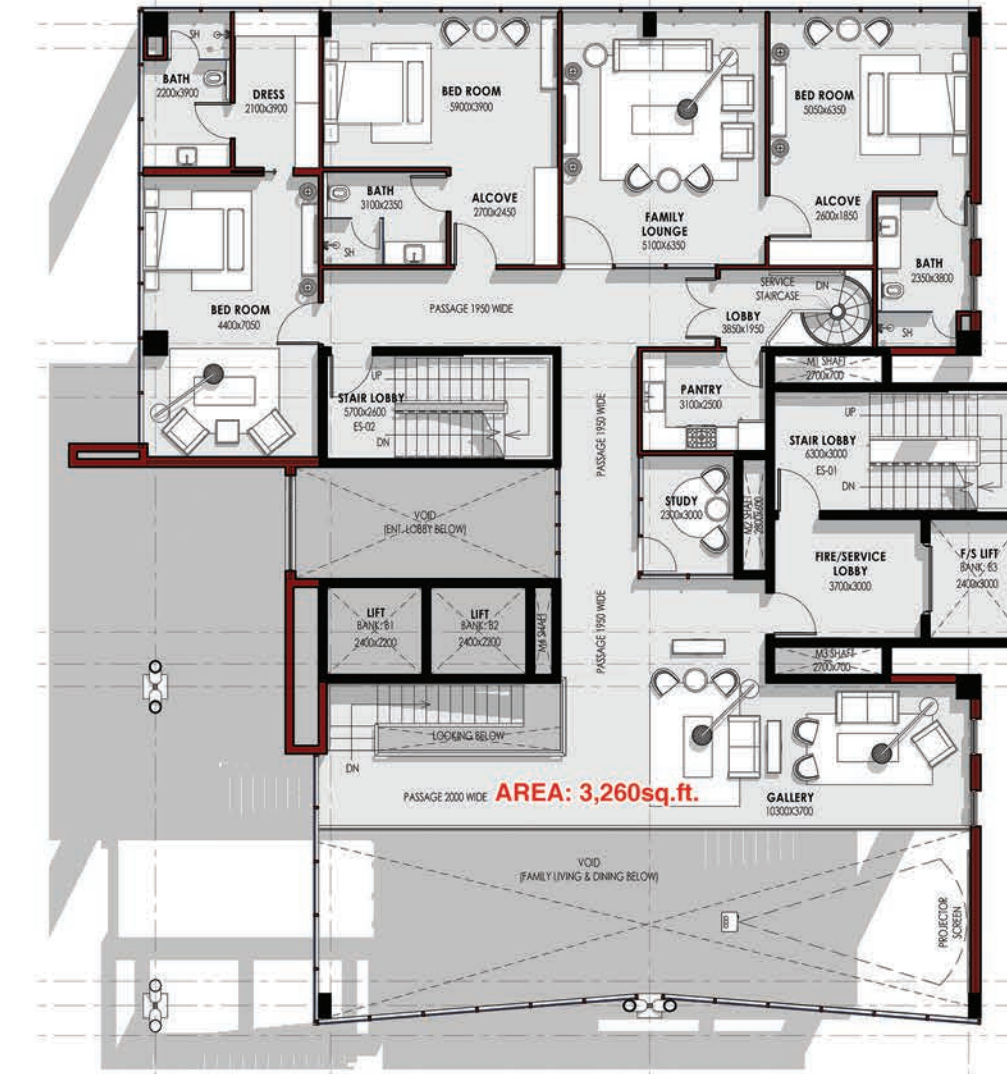
TOWER - B  
LEVEL-11

OPTION A



TOWER - B  
LEVEL-12

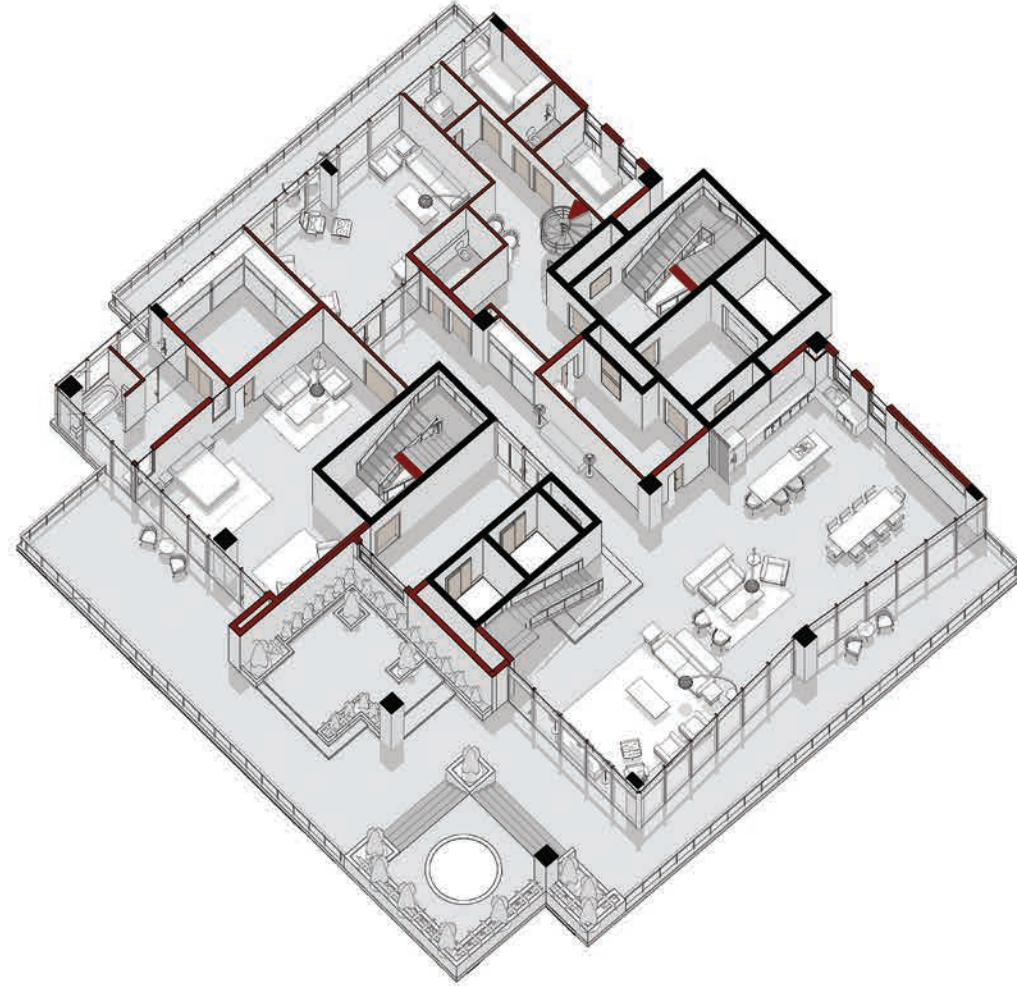
OPTION A



BROUGHT TO YOU BY

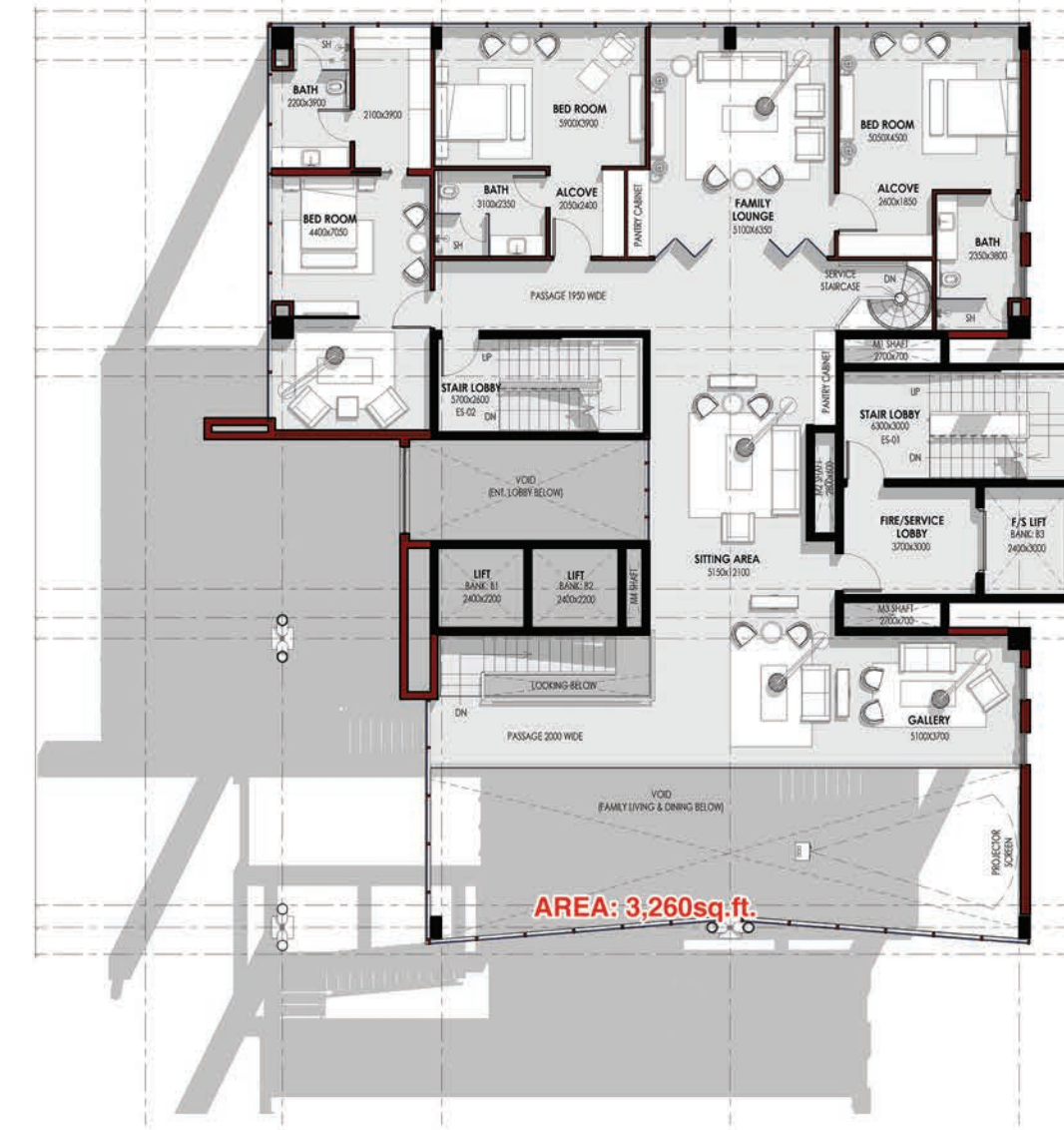
TOWER - B  
LEVEL-11

OPTION B



TOWER - B  
LEVEL-12

OPTION B



BROUGHT TO YOU BY

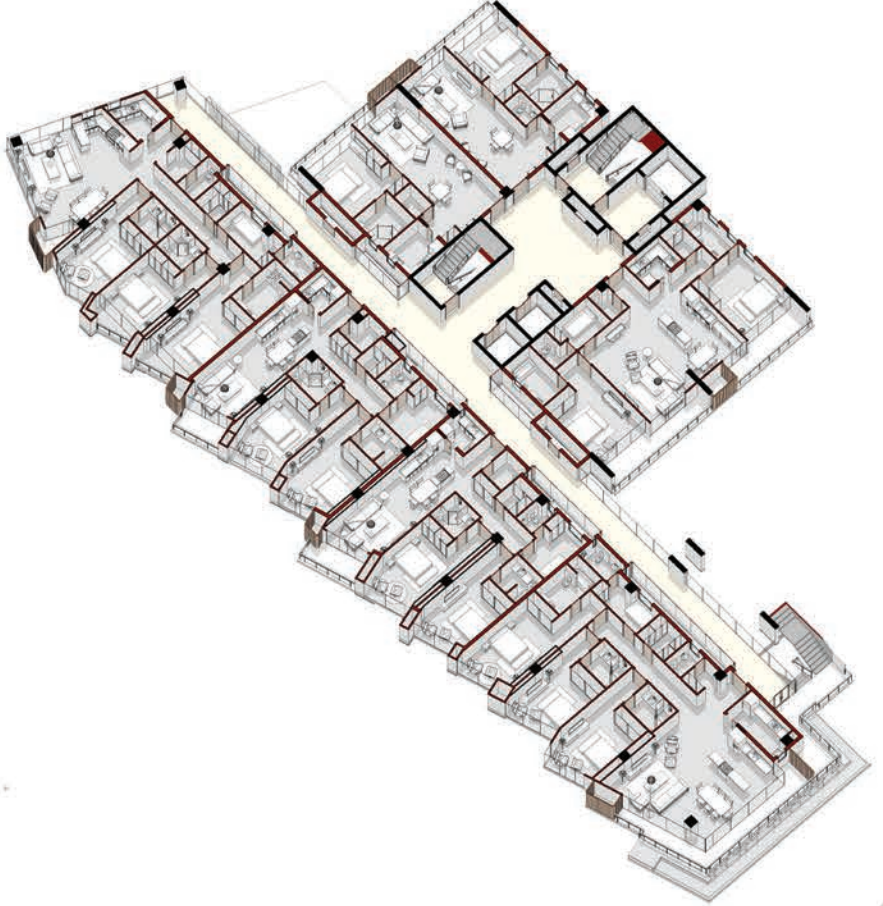
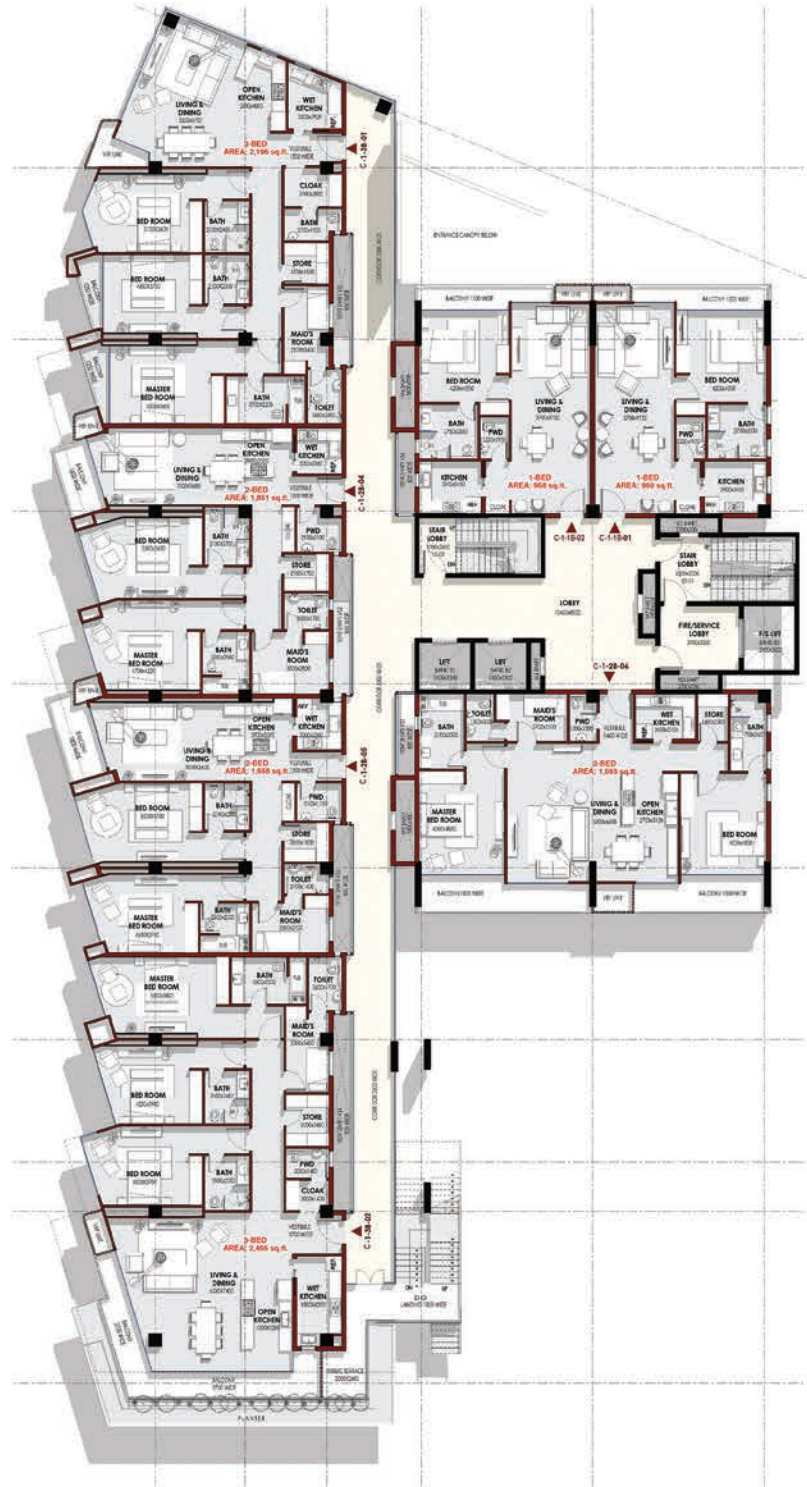


**zameen.com**  
Har Pata, Humain Pata Hai

# TOWER - C GROUND LEVEL



# TOWER - C LEVEL-1



BROUGHT TO YOU BY



**zameen.com**  
Har Pata, Humain Pata Hai

# TOWER - C LEVEL-2



# TOWER - C LEVEL-3

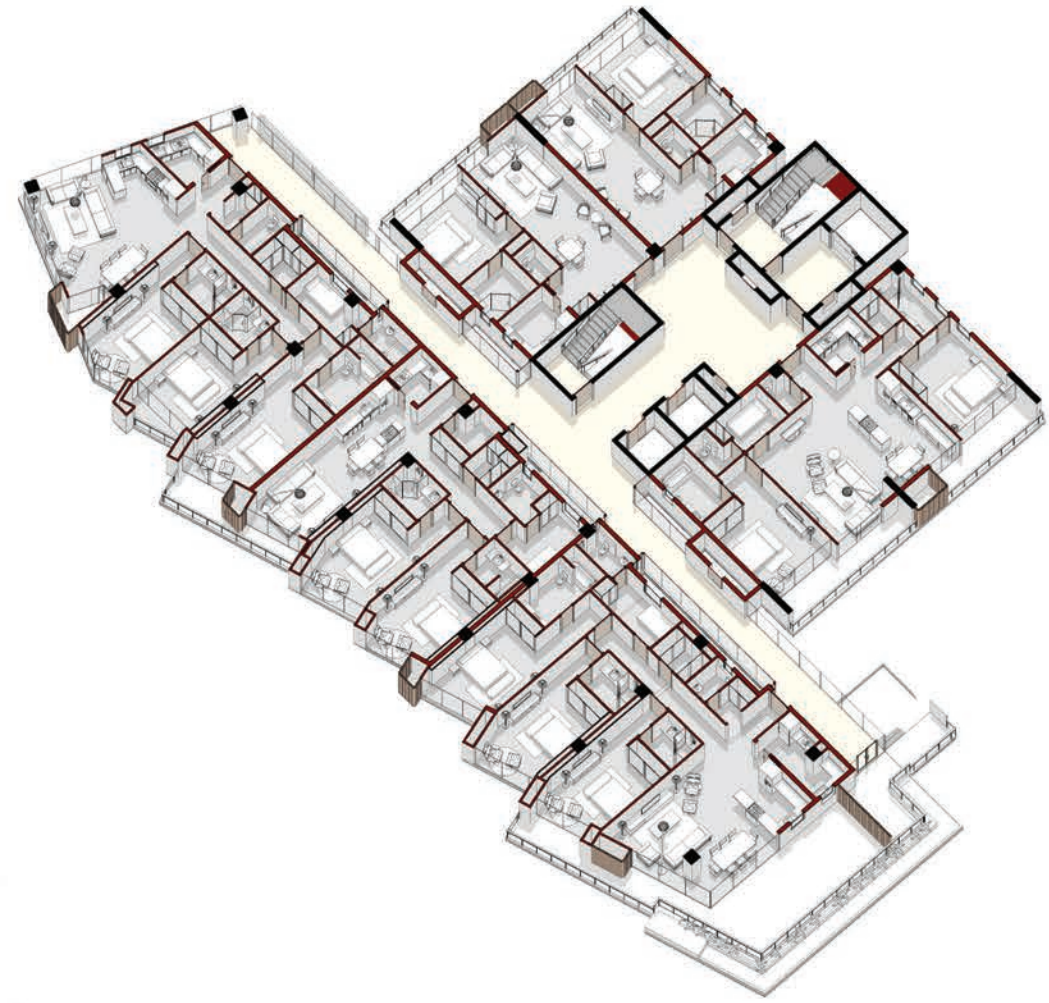


BROUGHT TO YOU BY



**zameen.com**  
Har Pata, Humain Pata Hai

**TOWER - C**  
**LEVEL-4**



**TOWER - C**  
**LEVEL-5**



BROUGHT TO YOU BY



# TOWER - C LEVEL-6



# TOWER - C LEVEL-7



BROUGHT TO YOU BY



**zameen.com**  
Har Pata, Humain Pata Hai

# TOWER - C

## LEVEL-8



# TOWER - C

## LEVEL-9



BROUGHT TO YOU BY

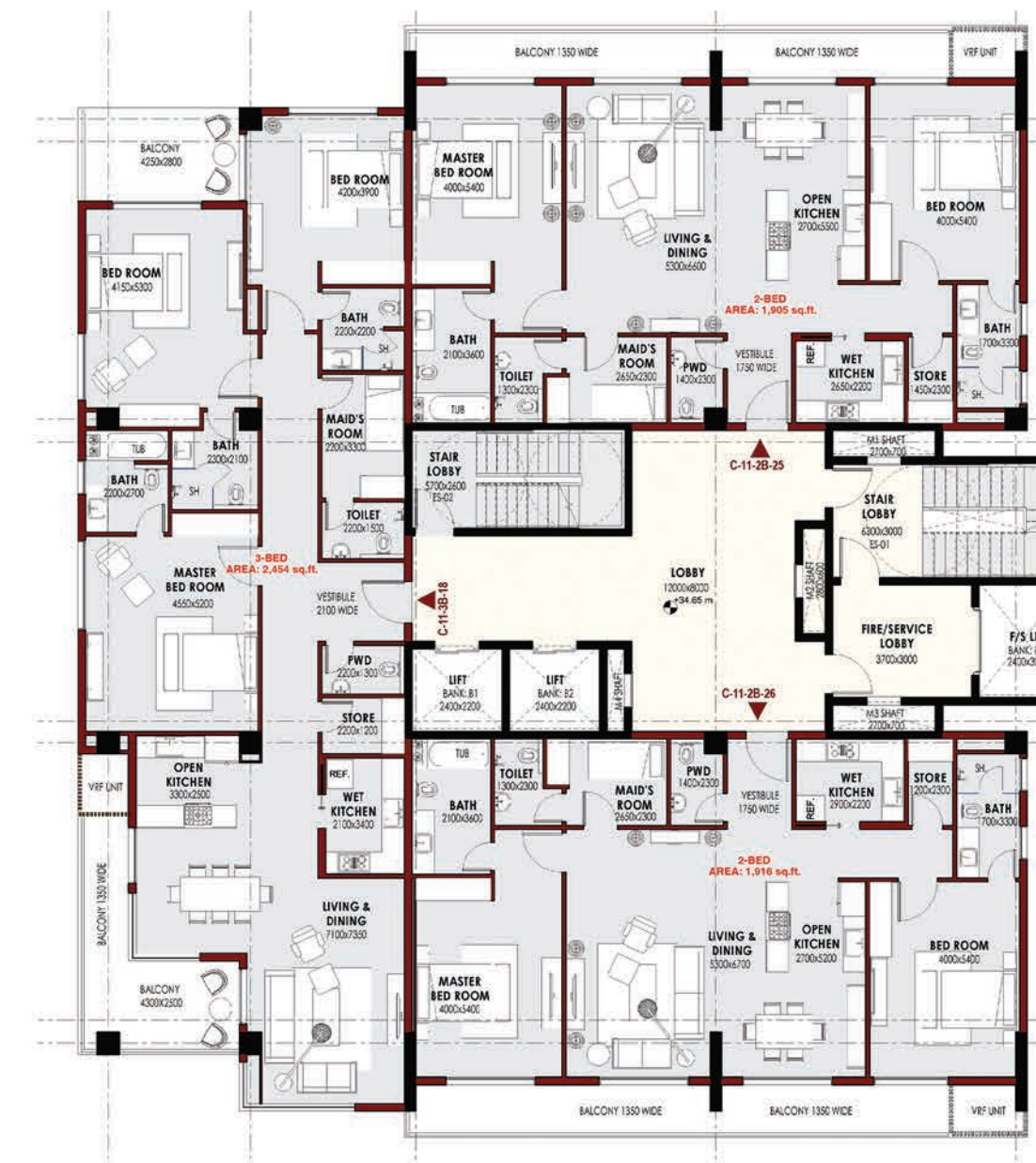




# TOWER - C LEVEL-10



# TOWER - C LEVEL-11

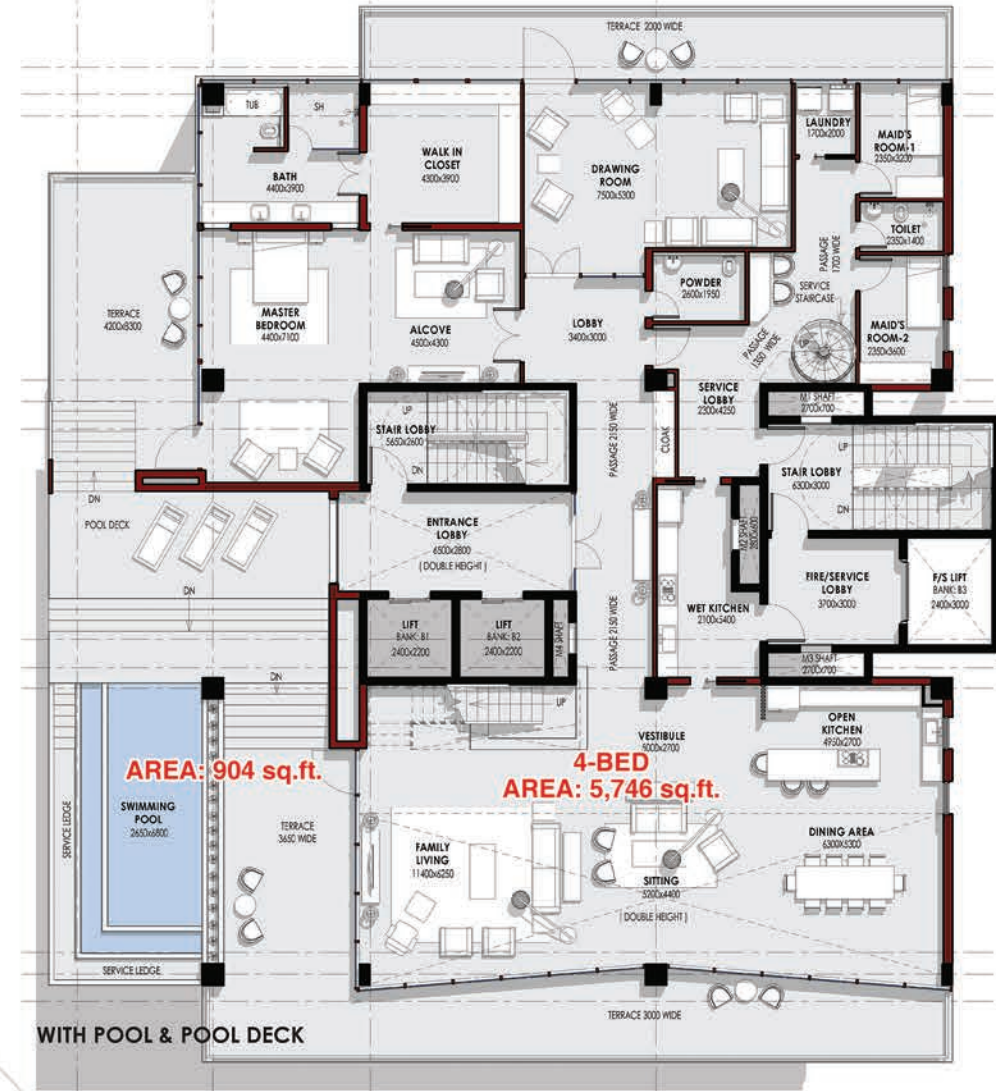


BROUGHT TO YOU BY



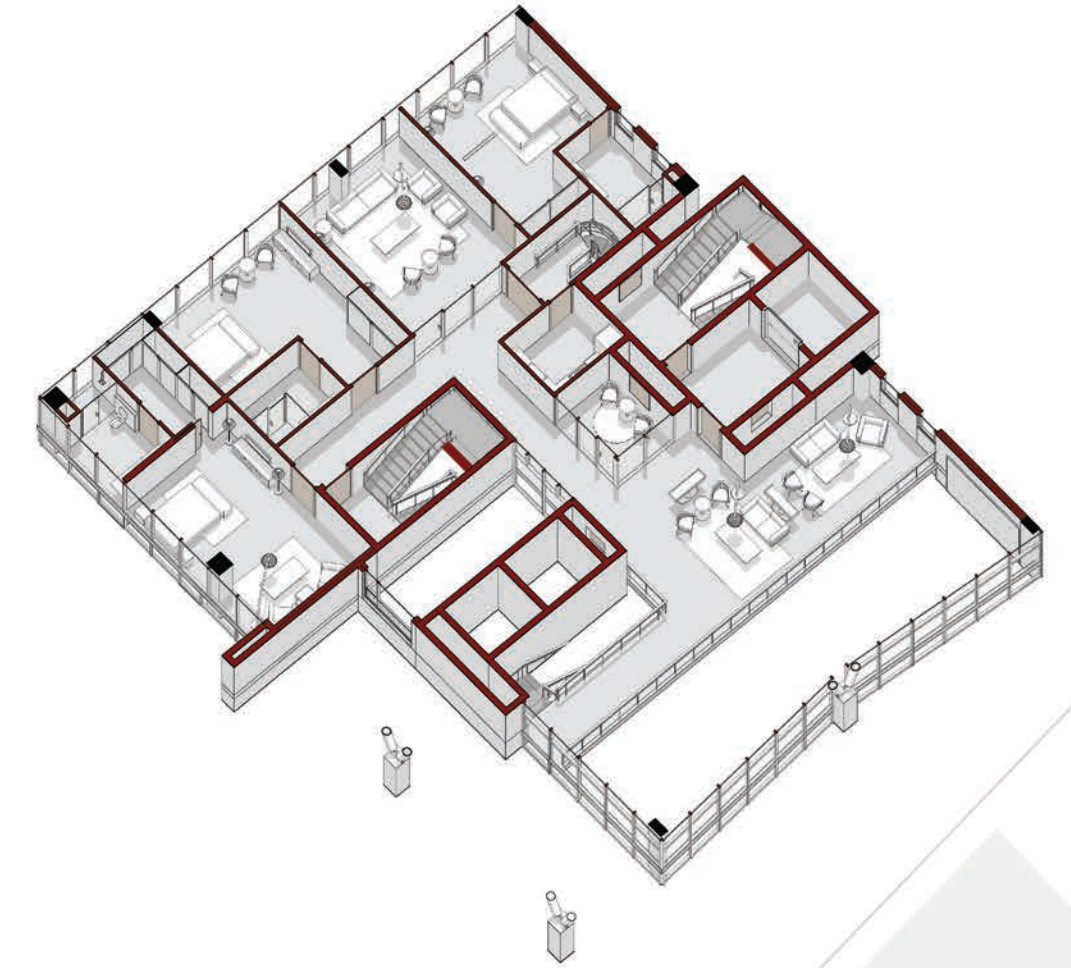
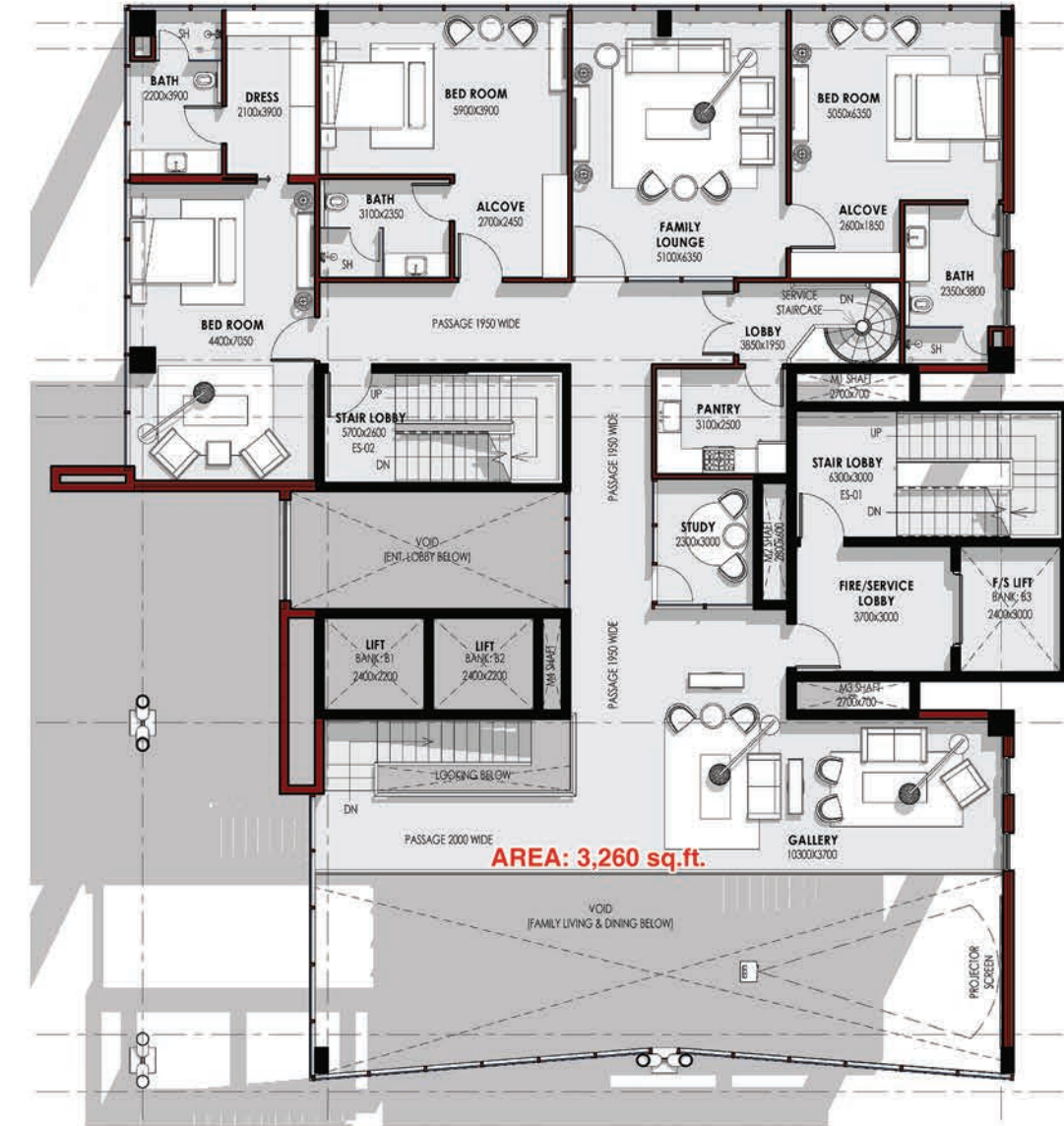
TOWER - C  
LEVEL-12

OPTION A



TOWER - C  
LEVEL-13

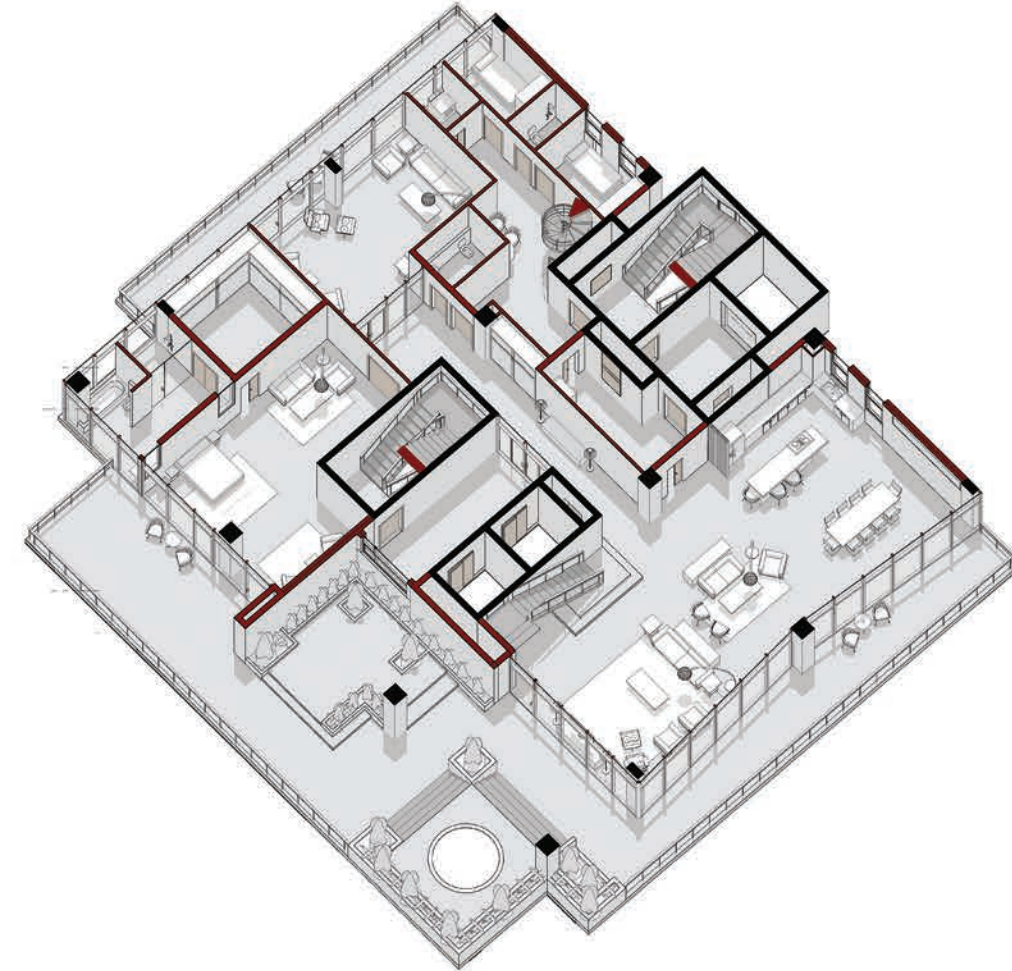
OPTION A



BROUGHT TO YOU BY

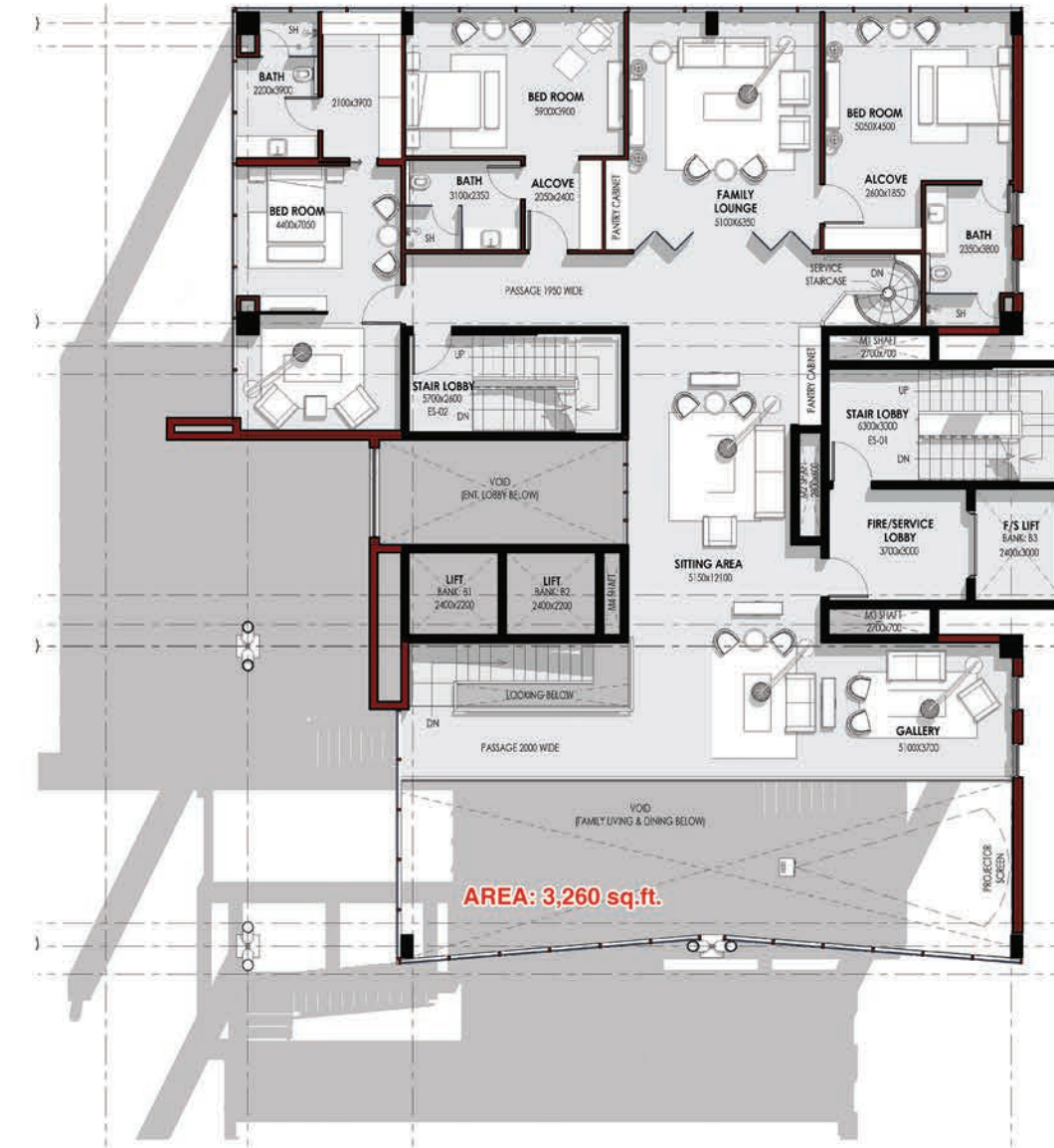
**TOWER - C**  
LEVEL-12

OPTION B



**TOWER - C**  
LEVEL-13

OPTION B



BROUGHT TO YOU BY



## CONDOMINIUM BUILDING SPECIFICATION

### Structural

Reinforced Concrete Frame Structure/Slab

### External & Internal Walls

Combination of Solid & Hollow Blocks

### Roof

Metal Roof

### Ceiling

False Ceiling (Gypsum)

### Door

**Main Entrance :** Fire Rated Wooden Door

**Others :** Imported Quality Doors

### Locks

Imported Quality Locksets

### Floor Finishes

**Main Area:** Porcelain Tiles

**Kitchen:** Ceramic Tiles

**Bedrooms:** Laminated Wooden Floors

**All Other Areas:** Ceramic Tiles

### Wall Finishes

**General Area :** Cement Plaster & Paint

**Bathroom/Powder Room/Kitchen :**

Ceramic Tiles

### Sanitaryware & Fitting

Imported Quality Sanitaryware and Fittings.

### Mechanical & Electrical

Lighting Point, Fan Points, Telephone Points, Tv Points, Power Points, Air Conditioning System and Gas Points will be provided according to M&E

### Wet Kitchen & Wardrobes

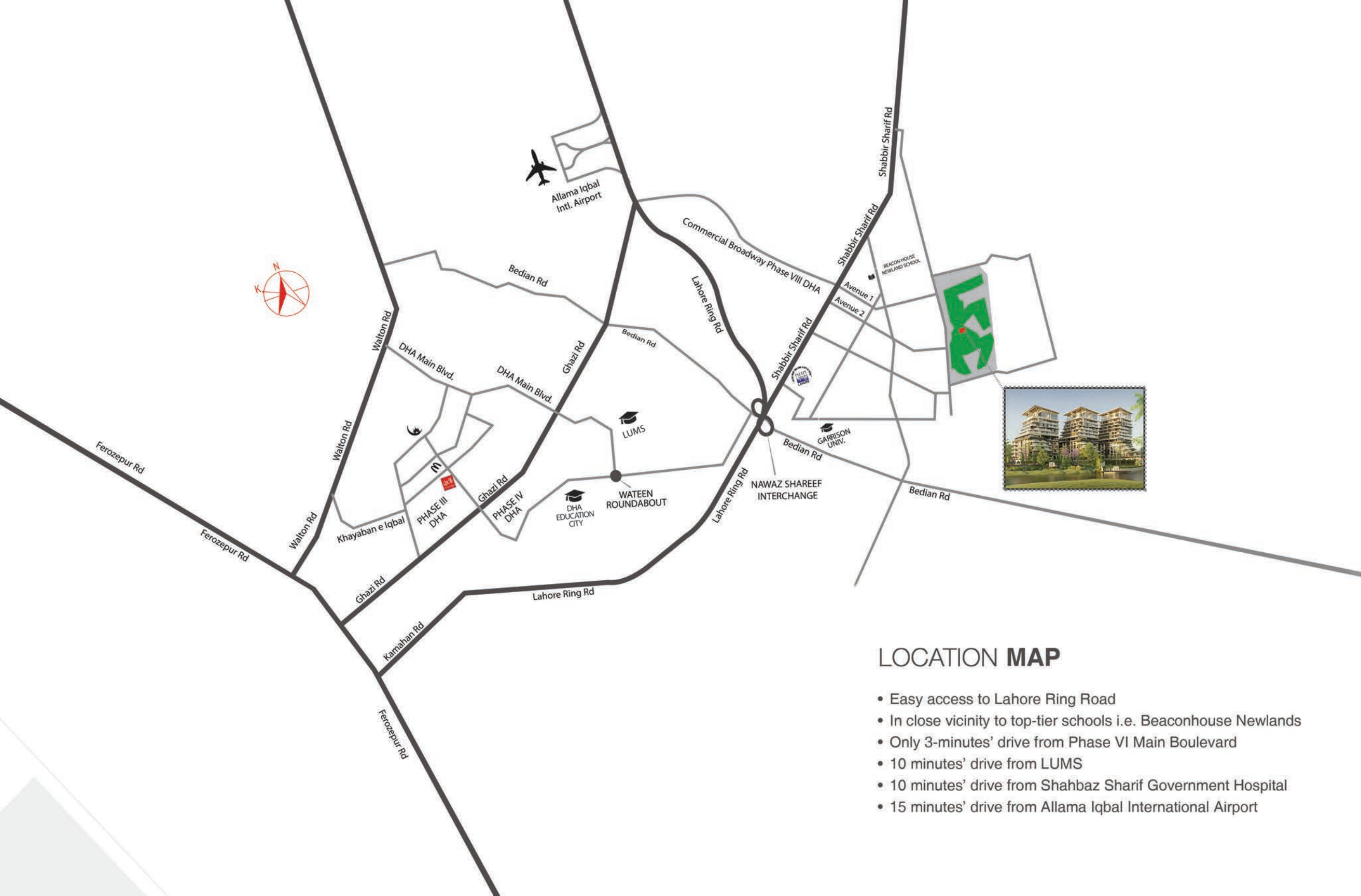
Will be installed as per Architect's detail & specifications

### Open Kitchen

Optional, can be provided at additional cost

BROUGHT TO YOU BY





### LOCATION MAP

- Easy access to Lahore Ring Road
- In close vicinity to top-tier schools i.e. Beaconhouse Newlands
- Only 3-minutes' drive from Phase VI Main Boulevard
- 10 minutes' drive from LUMS
- 10 minutes' drive from Shahbaz Sharif Government Hospital
- 15 minutes' drive from Allama Iqbal International Airport



A Joint Venture Between

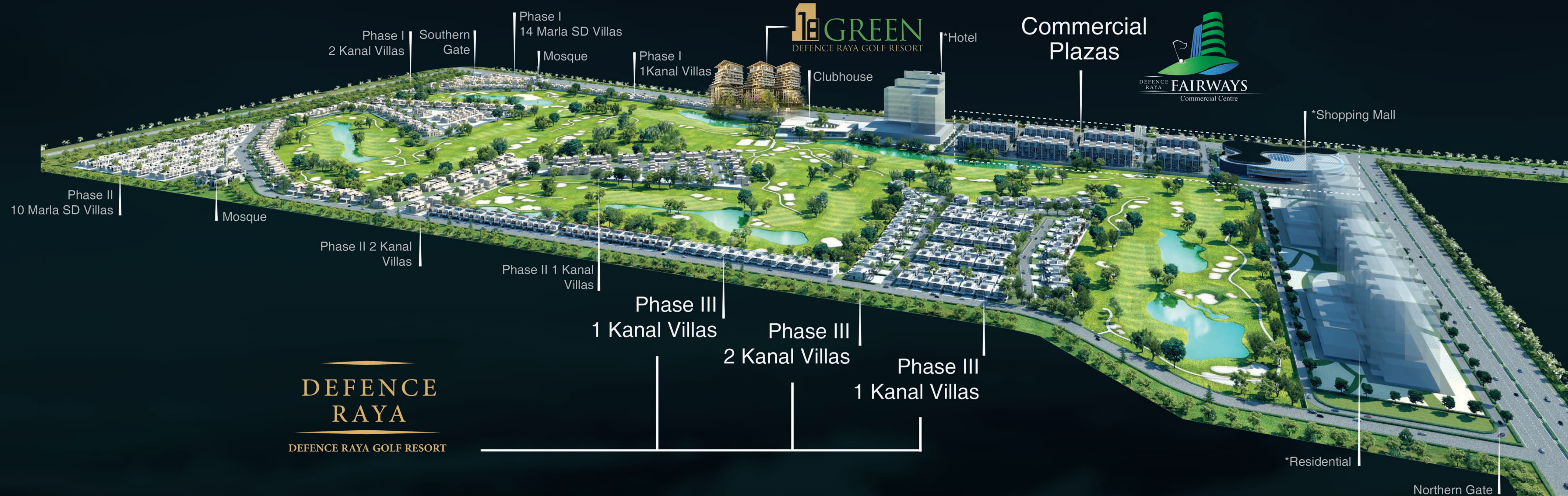


THE PLACE TO BE  
**THE PLACE**  
 TO LIVE

BROUGHT TO YOU BY



**zameen.com**  
 Har Pata, Humain Pata Hai



Phase I  
2 Kanal Villas

Southern Gate

Phase I  
14 Marla SD Villas

Mosque

Phase I  
1 Kanal Villas

**GREEN**  
DEFENCE RAYA GOLF RESORT

\*Hotel

Clubhouse

Commercial  
Plazas

**DEFENCE RAYA FAIRWAYS**  
Commercial Centre

\*Shopping Mall

Phase II  
10 Marla SD Villas

Mosque

Phase II 2 Kanal Villas

Phase II 1 Kanal Villas

Phase III  
1 Kanal Villas

Phase III  
2 Kanal Villas

Phase III  
1 Kanal Villas

**DEFENCE RAYA**  
DEFENCE RAYA GOLF RESORT

\*Residential

Northern Gate



## DISCLAIMER

All information contained herein, including specifications, facilities, plans, measurements and illustrations are subject to amendments without notifications, as may be required by the Authorities or Developer's consultants and is not intended to form and cannot form part of an offer or contract. All measurements are approximate and images and illustrations are artists' impressions only.

BROUGHT TO YOU BY



## ABOUT ZAMEEN.COM

Zameen.com is Pakistan's largest property portal. Founded in 2006, it has grown to become Pakistan's most trusted real estate brand today, with over **5.5 million** visitors to the website every month.

Every project Zameen.com markets goes through a stringent vetting process to ensure that every single buyer is completely satisfied with their purchase, and it is with this decade of trust that Zameen.com brings you Defence Raya Golf Resort, of which it is the exclusive marketing partner. This legacy of trust ensures that buyers are making the right decision.

### FOR MORE INFORMATION & BOOKING

CALL OR VISIT US TODAY

#### Booking Office

Zameen.com, Pearl One, 94-B/1, M.M. Alam Road,  
Gulberg III, Lahore

#### Site Office

Defence Raya Golf Resort, Sector M,  
Phase VI DHA, Lahore

#### ☎ 24/7 Sales Centre

PAK: +92 42 111 333 333  
DUBAI: +971 4 4378010

BROUGHT TO YOU BY  
 **zameen.com**  
Har Pata, Humain Pata Hai